



Staple Hill

Local ... Lively ... Loving



Majors Colin & Nicola Hylton-Jones

Corps Officers: 0117 9565232

Corps Website: www.staplehillsa.uk

Hall Address:

21 Broad Street, Staple Hill BS16 5LN

Telephone: 0117 9569733

contactstaplehill@gmail.com

Sunday 19th July 2020

Bulletin e-mail: staplehillbulletin@gmail.com

A few years ago, I was in a garden centre when I noticed a plant that was sat all on its own. It had dark purple leaves, a small cluster of bright pink flowers and was growing flat across the top of the pot – but it had no label so I had no idea what it was. It looked interesting and so I took a punt and bought it anyway as I thought it would look good against the gravel at the front of my house.

Once planted, instead of growing flat along the ground it shot straight upwards and is now a 4m tall elder tree (*sambucus nigra* 'black beauty'). It is a very beautiful specimen tree, but not what I had expected!

The elder tree is rich in folklore. It is said that an elder tree planted outside a house will ward off evil spirits, and can be a home for elves or even pagan goddesses. In early christian tradition, the elder was also said to have been used to make the cross on which Jesus died. Clearly none of that would have been true – but I love my elder tree nonetheless.

It may not be a tree that actually contains mystical properties – but I don't need that, do I? , In [2 Thessalonians 3 verse 3](#) it states:

"The Lord is faithful, and he will strengthen you and protect you from the evil one".

Paul Heath

THE SALVATIONIST:

Unfortunately, the Salvationist publication has not been delivered this week. We are hoping that they will come early next week, but it may not be possible to get them to you until next weekend. I am sorry for this inconvenience, but it was matters beyond our control. The War Cry and Kids Alive did arrive and will be distributed.

PRAYER DIARY:

As a church, we know how important it is to uphold each other in prayer, so we invite you to pray for the following during this coming week.

20 th	Tom C; Olive M; Loraine B; Haydn & Trudi B; Hannah & Katie
21 st	Molly A; Ashayi. Moses, Junior & Eli C; Brenda H; Peter & Valerie S; David & Doreen S
22 nd	Laura & Neil B; Mark C; Aiden N; Charlie T; Daisy U; Brian & Pat U; David T; Jeanette N
23 rd	Ruth & Ted B, Bev, Jon, Harry, Jessica and Emily D; Kelvin & Linda J; Malcolm & Mary W, Janine J & family
24 th	Ruth & Elise B; Esther D; Phil & Tash J; Jen & Les P; John W; Karen R; Paul & Brenda C; Francis & Ruth S
25 th	Bethany D; Elsie & Mike D; Bev W; Doris P; Geoff P; Glynn E; Beth E; Emma, Sam, Noah & Riley R
26 th	Sarah & Tim B; Morag F; Esther K; Lynette P; Sophie & Kathleen C; Mary Br; Debra & Mark H; Sue M

EXTRA SLICE TAKE AWAY:

During August we are hoping to send/deliver an Extra Slice Take Away box! A takeaway box of readings, prayers and resources to help you in your Christian journey. We are making up 150, so if you can help with the distribution please let us know. If you don't get one over the coming 2 weeks, then please contact Linda James.

FLOWERS:

The flowers that would have been placed on our altar table today would be by Jo and Gary Risdale.

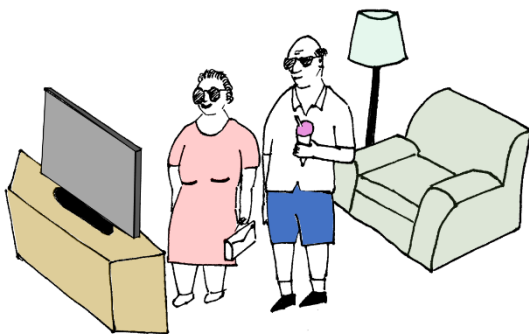
FELLOWSHIP BULLETIN:

You will be sad to learn that David Banfield was promoted to glory this week. Our thoughts and prayers are with Janet and their daughter Kate. Ken Willetts is still far from well and in addition to his poor health, suffered a fall this week which required surgery. Please continue to pray for Ken, along with Yvonne, Marc and Ken's family.

Beryl Gardner enters hospital on Monday for an operation on her leg. We pray that all goes well and according to plan.

The funeral for Ruby has been arranged for Tuesday, 4th August, but due to a restriction in numbers the service will be for family members only. However, we are hoping that the service may be recorded for those unable to attend.

We [Colin and Nicola] are on holiday for 2 weeks from 20th July, returning on the 3rd August. Prior to leaving we have recorded worship, so thanks to Mark for enabling our online worship to continue whilst we are away.



Visiting the local church whilst on holiday just doesn't seem the same this year!

PRAYER NETWORK:

This week we have been upholding Janet and the family in prayer following David Banfield's promotion to glory, and thinking of Tina and Mike who lost their son from a heart attack - Mike has also suffered a major stroke and is very ill.

THE SEVERN & SOMERSET DIVISION:

The Severn & Somerset Division has gone live with its own YouTube channel. <https://youtu.be/bQn0IDvOsnw>



The Severn & Somerset Division in Celebration

**Divisional Officers' Welcome
and
Divisional Candidates' Farewell**

SUNDAY 26 JULY, 4.00PM

SUBSCRIBE TO OUR YOUTUBE CHANNEL:
'THE SALVATION ARMY S&S DIVISION'

(LINK TO BE CONFIRMED)

If you subscribe to this channel, you will be able to join in the above celebration to welcome new officers arriving into the Division:

- Majors David and Denise Wise – Bath Citadel Corps
- Lieutenant Emma Francis – Midsomer Norton Corps
- Major Teresa Harris – Weston Super Mare Corps

And say goodbye to the cadets who are leaving to enter the Training College this year:

- Cadet Emily Hague – Clevedon Corps
- Cadets Jo & Thomas Morgan – Swindon Gorse Hill

SCARECROW TRAIL:

Anita Dobson (member of Christ Church, Downend) is organising a community event around Ducie Road. A scarecrow trail is when households make a scarecrow and put outside their home, and you get a map and go and visit them all to identify them.

For more information, please see the poster below or visit the facebook page Scarecrow Trail at Staple Hill:

https://www.facebook.com/Staplehillscarecrows/?modal=admin_todo_tour



Make a scarecrow of a famous person: be creative!

Register your scarecrow by 20 July so it's on the map

Share the event with friends and family

Put it outside your house from Thurs 6— Sun 9 Aug

Get your free copy of the map and spot as many as you can!

Go to Facebook Page Staple Hill & Friends Scarecrow Trail to register, get info & ideas

Or email scarecrowsatstaplehill@gmail.com

Make the neighbourhood smile!

Organised by Ducie Road Support Group Supported by Friends of Page Park

THE WEEK AHEAD:

All activities within our buildings continue to be suspended until it is deemed safe, but the following activities continue:

TODAY Sunday 19th July

- from 10am Lighthouse Club Session available online (ages 7-11)
- 10am Youth Group meets online (ages 11+)
- from 11am Sunday Worship available online
'Creation' [Genesis 1:1 - 2:4](#)

Monday 20th July

- 11am - 12pm Food Parcels available at Hall
- 8pm Mission Council Meeting on-line

Tuesday 21st July

- 11am - 12pm Food Parcels available at Hall

Wednesday 22nd July

- 2pm Extra Slice Group online
- 3.30pm Extra Slice Group online
- 7pm Extra Slice Group online
- 8.15pm Extra Slice Group online

Thursday 23rd July

- 11am - 12pm Food Parcels available at Hall
- 8.15pm Extra Slice Group online

Saturday 25th July

- 11am - 12pm Food Parcels available at Hall

Sunday 26th July

- from 10am Lighthouse Club Session available online (ages 7-11)
- 10am Youth Group meets online (ages 11+)
- from 11am Sunday Worship available online
'Eye of a needle' [Matthew 19:16-26](#)